

Specialists in single ply synthetic flat roofing systems and with more than 15 years of experience in Europe, CGMA promotes innovative, sustainable, eco-friendly synthetic waterproofing systems. We offer a global approach from design to maintenance. Through our certified partners, we guarantee the installation of our synthetic waterproofing systems with a real technical expertise. CGMA delivers innovative TPO solutions for today's roofs.



**Your partner in innovating
single ply roofing
solutions made of TPO**





« Management of project from initiation to hand-over within schedule, budget and accident free! This was a great collaboration with team of professional proud of their works. I personally enjoyed working with CGMA. »



Approach and experience

We are constantly innovating and developing our range to be able to offer you the latest generation of synthetic waterproofing solutions made of **TPO/FPO membrane**, in perfect harmony with the challenges of today and tomorrow: **durability, energy performance and eco-responsible construction**.

We help your organization to master all the challenges of **safely installing solar technology** on flat roofs with our penetration-free systems

CGMA is committed to offering a complete line solutions as exclusive as your project. Opting for our processes is now **the choice of investors, innovative** and eco-responsible manufacturers

Our Values

Innovation

Committed to sustainable and improved development of commercial roofing products, **CGMA** guarantees you unique, **innovative and ecologically sensitive** TPO waterproofing solutions.

Specialization

With more than 15 years of experience and mastery of the challenges related to flat roof waterproofing, CGMA has successfully **managed the most advanced challenges** and projects from demanding industrials.

Commitment

Valuing **a long-term partnership**, the contact between people and project actors, CGMA offers you advice, technical follow-up, support and quality of service, throughout the duration of your project. From the day it starts until long after it is finished.

They trust us

Airbus, Lidl, Decathlon, Seat, Amazon, Carrefour, Ikea, Michelin, La Redoute, Grundfoss, Sheraton, MSD, Fiat, Honda, Eurocopter, BNP Paribas, Vinci, Bouygues, Aldi...

TPO / FPO based single ply roofing membranes

A **strategic choice of the system** put in place over others can generate additional benefits for the planet as well as investors. Your decision will make the difference between a "standard" building and an **exemplary building** in terms of sustainability and environmental impact

TPO's acceptance by the commercial roofing marketplace is really no mystery. Building owners, architects and contractors have already and objectively analysed **all benefits our TPO** has to offer.

Our synthetic roofing processes **meet the most demanding technical requirements**, in line with current ecological concerns. TPO (Thermoplastic Poly Olefin) or FPO (Flexible Poly Olefin) is considered to be the "new generation" of synthetic membranes, incorporating the advantages of EPDM and PVC-P, while annihilating their recognized defects.

A long-lasting investment

Our products are designed to offer long-lasting performance, their most remarkable feature, in addition to their eco-friendly design, is their high resistance to weathering and their **durability in excess of 30 years**. Thanks to these numerous advantages and characteristics, both in terms of performance and installation, our solutions are now very frequently used and prescribed on flat roofs.

In addition, no special maintenance is required to ensure its durability. This is why it is highly appreciated in industrial and commercial roofing.

A totally inert membrane

Due to their inert nature and without addition of plasticizers, our TPO/FPO membranes remain stable over time. Their estimated life expectancy exceeds 30 years. This is a key requirement when choosing a waterproofing solution, especially when the roof is intended **to host a photovoltaic field**. Opting for sustainable products **is a smart economic and environmental choice**.

A safe membrane

With **no risk of fire** starting during the construction phase, because of their weldability using hot air and not flame (like modified bitumen), our systems comply with the strictest fire regulations and meet the EN 13501-5 standard (Brooft1, t2, t3 and t4 solutions). Without oil, chlorine or halogenated compounds, the welding of our membranes **does not generate any emission of opaque or toxic gases**.



Key benefits :

- High durability of more than 30 years,
- Inert, free of softeners and chlorine as for PVC-P,
- Safe for health, water, soil, animals, and plants
- Ecological and recyclable,
- Installation by mechanical fixing, bonding or ballast,
- Compatible with all insulators on the market,
- Very clean installation,
- Heat welding of the seams with hot air and no flame,
- UV resistant and very high mechanical properties,
- Very resistant and easily repaired by welding,
- Soft and lightweight,
- Appreciable flexibility at low temperatures,
- Choice of several colours including grey, lead grey or white,
- Very competitive prices,
- Compatible with bitumen,
- Ideal solution in combination with photovoltaic power plant,
- Ideal for green roofs FLL and EN 13948 certified,

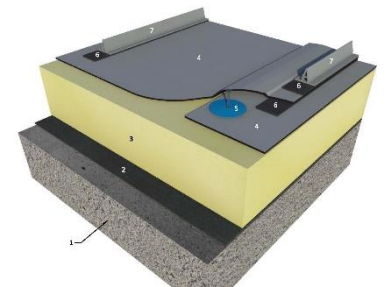
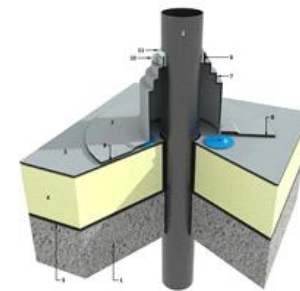
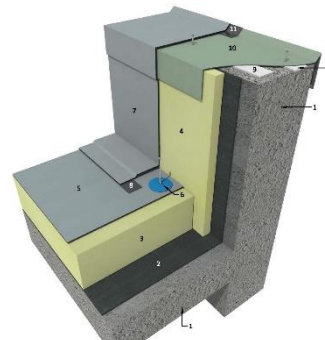
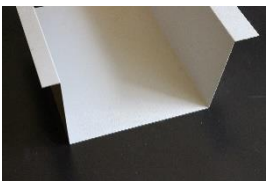


TPO accessories

CGMA provides you with ancillary items adapted to your needs and the realization of **efficient and durable details**. The innovation of our solutions does not only apply to our membranes, but also to our range of accessories. Those are **reliable and productivity boosters** to further secure a comprehensive highly valuable roofing complex **while minimizing its installation costs**.

This secures, for you, the convenience to obtain all components necessary for a total TPO roofing system **from a single source**.

Our accessories or solutions tailored to your needs **secure the realization of the most critical details** and singular points in compliance with the associated standards.



Highly reflective TPO white membranes

In addition to its aesthetic aspect, our **Cool Roof membrane** range minimises solar heat gain thereby keeping roof surfaces cooler under the sun. This is due to its specific compound and pigments used, which both reflect the solar radiation (solar reflectance) and release the absorbed heat (infrared emittance).

These same membranes do effectively **reduce the "heat island effect"** acting as a passive cooler.

In association with photovoltaic panels, your roof composed of these same membranes will accentuate the albedo effect and therefore increase the **efficiency and the energy yield of your photovoltaic field** thanks to their high reflective.

In addition, these same membranes will also act as a passive cooler for your photovoltaic panels.



Our Highly Reflective White Membranes Ensure

- An optimum yield of your photovoltaic field production,
- A significant increase of the "Albedo" effect,
- A reduction of the heat island effect in the city
- Improved indoor thermal comfort for building occupants acting as a passive cooler,
- Reduction of the energy required for interior cooling units,
- Reduce thermal stresses on the roof potentially improving system lifetimes,
- A better durability of your roof.

Unique photovoltaic process

Invested in the development of integrated photovoltaic processes on TPO roofs since 2005, we help you to successfully meet the challenge of an effective, **efficient and safe installation of solar technology** on flat roofs.

Our **PV ready**-to-install system is a **unique and innovative solution** for the integration of photovoltaic power generation on flat TPO roofs. With **no penetration and no ballast**, our system, installed by certified applicators, will be able to accommodate a very wide choice of PV generators without affecting the watertightness of your roof.

In addition to this unique process, we have equally set in place **a unique European partnership with a PV international leader**. This offers you the possibility to have a single person of contact who is in charge of your roof and the installation of your PV production plant; safeguarding your TPO roof and your integrated photovoltaic field.

We see **photovoltaic installations and your TPO roof as a coherent system**. CGMA has developed the most efficient photovoltaic mounting system on the market; a unique, flexible, reliable, non-penetrating, durable, very fast to install, secured and **automated heat welded system**.



Key benefits :

- Without ballast or in respect with wind Eurocode EN 1991-1-4,
- Extremely light 1 kg/ml and without penetration of the waterproof complex,
- The most lightweight concept on the market,
- Unique technical answer for lightweight roof structure,
- Ideal in case of renovation and high wind zones,
- Automated profile heat welding system,
- Unique partnership with European PV leader,
- Very high execution speed (welding at 5 ml/minute),
- Use of standard widths membranes (1.50 m, 1,05m and 0.75 m),
- Dynamically tested in the wind according to ETAG 006 and EN 16002,
- Statically tested within notified body (BBRI),
- Allows the addition of all types of auxiliary accessories like cable trays,
- No risk of delamination,
- Qualifies for Green Building Council LEED credits,
- The most advanced and innovative system on the market,

Environmental vision and policy

Advancing thinking on the design, production and marketing of **eco-responsible** products has always been **a priority** for our organization and our business partners. In recent years, we have seen the growth of environmental awareness and certifications, projects in which we were directly involved.

Green building council and leed credits : LEED (Leadership in Energy and Environmental Design) certification was created in 1998 by the US Green Building Council and is now the **most widespread certification in the world**. The implementation of our roofing solutions directly contributes to the performance of the structure and thus allows our customers to further obtain these precious LEED credits.

LCA and EPD Declaration : Our TPO membranes and systems are holding an LCA (Life Cycle Assessment) survey and an EPD (Environmental Product Declaration) in accordance with EN 15804 (Contribution of construction works to sustainable development - **Environmental Product Declarations**). A **Life Cycle Assessment** (LCA) is a standard method for inventorying the incoming and outgoing flows of materials and energy at each stage of the life cycle and then assessing and comparing the environmental impacts. LCA is increasingly seen as a standard tool for **assessing the sustainability** of existing products and systems.

The cumulative energy demand of **our processes** is the lowest of all roofing systems and production compared to others. Hidden environmental costs are the lowest of all roofing membranes marketed to date (EPDM, PVC-P, modified bitumens). Their carbon footprint is therefore minimal. Our membranes offer **by far the most ecological alternative of the moment**.

No toxic risk : Our systems consist of inert, solvent-free compounds that are harmless to users and the planet, and do not require a plethora of accessories as with EPDM processes. The welding of the seams is done by hot air and without the emission of toxic substances, avoiding any risk of fire on the roof. The surfaces to be welded do not require any solvent-based liquid necessary for the preparation of the weld or any glue. Rainwater from our TPO roofs can be reused in a consumption circuit.

ISO 14001 certified production : The production of our membranes is ISO 9001 certified in compliance with the **REACH** regulation (Regulation (EC) No 1907/2006 of the European Parliament and of the Council of 18 December 2006). This European Union regulation was adopted to **better protect human health and the environment** against the risks associated with the use of chemical substances. The production of our membranes is ISO 14001 and OHSAS 18001 certified, enabling us to fully and continuously recycle production waste



Investing in the quality of our products is a smart and sustainable choice :

more savings, for longer





Contact us:

CGMA
INNOVATIVE FLAT ROOF SOLUTIONS

www.cgma.be

info@cgma.be

+32 460 96 31 41

